

APP CRS	Rwy Idg	5004
192°	TDZE	269
	Apt Elev	278

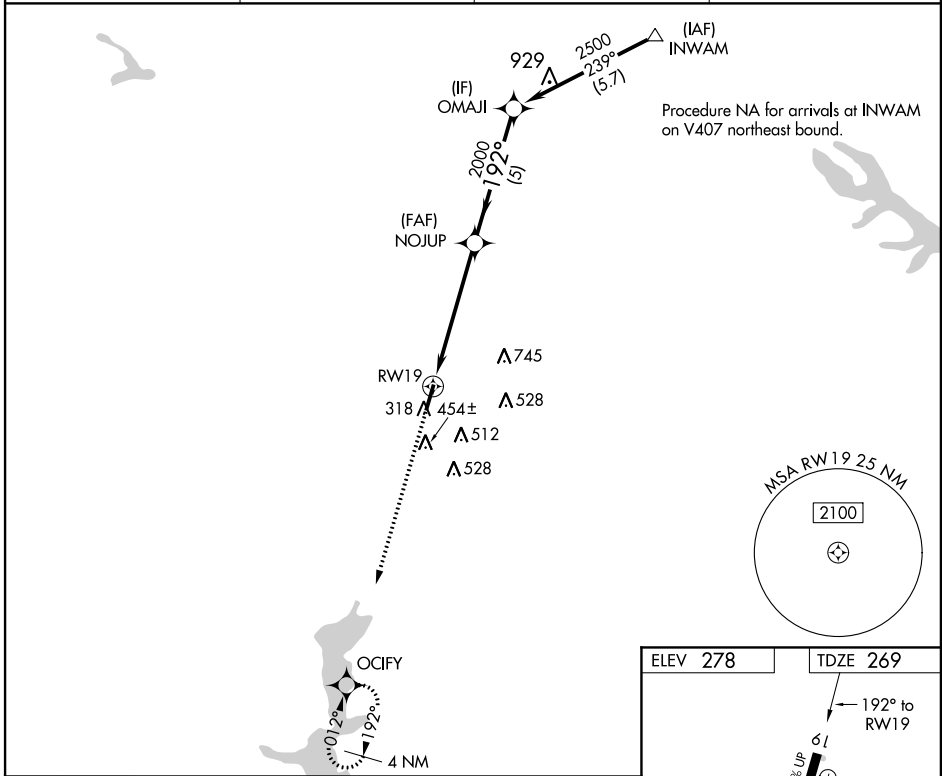
RNAV (GPS) RWY 19

MINDEN (MNE)

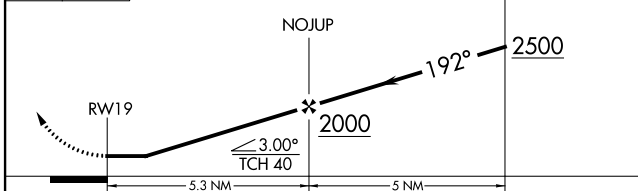
⚠ When VGSI inop, procedure NA at night. DME/DME RNP-0.3 NA. Helicopter visibility reduction below 1 SM NA. When local altimeter setting not received, use Barksdale AFB altimeter setting and increase all MDA 80 feet: increase visibility LNAV Cats C and D and Circling Cat C to 1¼.

⚠ MISSED APPROACH: Climb to 2500 direct OCIFY and hold.

AWOS-3PT 119.325	SHREVEPORT APP CON 118.6 350.2	GCO 135.075	UNICOM 122.8 (CTAF) ⓪
----------------------------	--	-----------------------	--



2500 **OCIFY** VGSI and descent angles not coincident (VGSI Angle 3.75/TCH 40).



ELEV 278	TDZE 269
----------	----------

MINDEN (MNE)
RWY 19

MIRL Rwy 1-19 **⓪**
REIL Rwy 1 and 19

CATEGORY	A	B	C	D
LNAV MDA	820-1	551 (600-1)	820-1½	551 (600-1½)
CIRCLING	820-1	542 (600-1)	820-1½	840-2
			542 (600-1½)	562 (600-2)

SC-4, 04 FEB 2016 to 03 MAR 2016

SC-4, 04 FEB 2016 to 03 MAR 2016